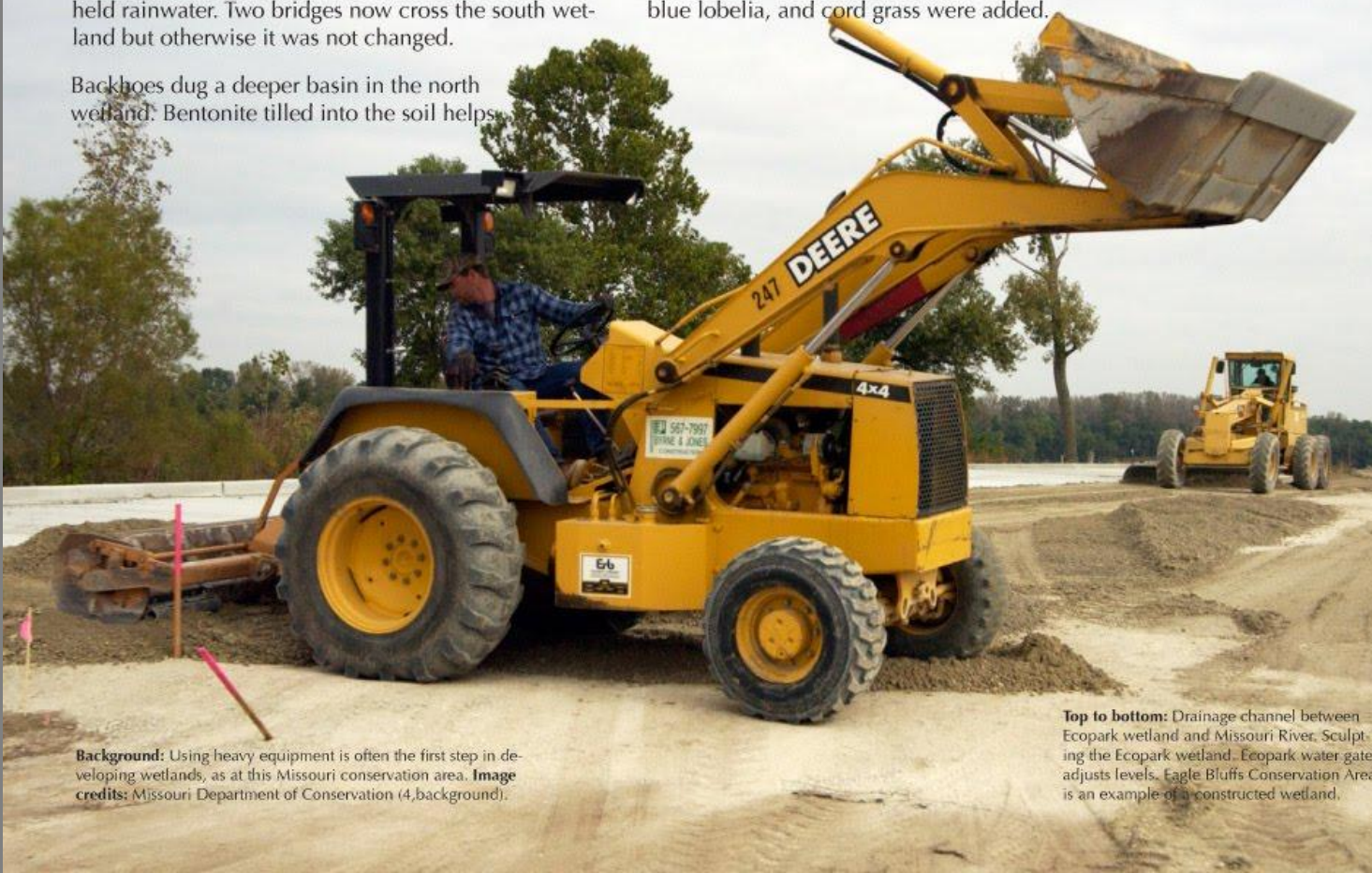


Making a wetland

Nature makes the best wetlands, but sometimes they have to be restored or constructed. The St. Charles Ecopark already had two natural basins that held rainwater. Two bridges now cross the south wetland but otherwise it was not changed.

Backhoes dug a deeper basin in the north wetland. Bentonite tilled into the soil helps

the clay contain water even better. Two passive wells draw groundwater. To give the wetland a head start, native plants like arrowhead, swamp milkweed, great blue lobelia, and cord grass were added.



Background: Using heavy equipment is often the first step in developing wetlands, as at this Missouri conservation area. **Image credits:** Missouri Department of Conservation (4,background).



Top to bottom: Drainage channel between Ecopark wetland and Missouri River. Sculpting the Ecopark wetland. Ecopark water gate adjusts levels. Eagle Bluffs Conservation Area is an example of a constructed wetland.